

Canon



Aplio flex

Scan smart.
Ignite your potential.





3

Canon

Canon

Canon

Canon



Remarkably sharp. Amazingly mobile.

Pristine images, automated functions, intelligent workflows – Aplio flex truly is as sharp as it looks. The system excels with mobility, high efficiency and imaging quality. Loaded with smart imaging and workflow functions, Aplio flex is the ideal system to handle a wide variety of imaging needs in a busy clinic. Its versatile design enables consistently high performance across the entire imaging portfolio.



Ready to perform.

With its outstanding image quality, robust design and intelligent workflow, Aplio flex offers you rock-solid performance for all of your daily imaging tasks and beyond. Experience how beneficial it can be to work with equipment that is particularly light and easy to handle – just like Aplio's new set of lightweight and ergonomic transducers.

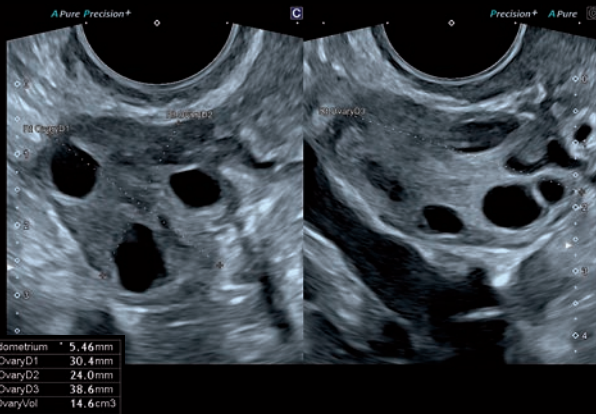


Next-generation transducer design

A new set of lightweight transducers with proven ergonomic design and outstanding usability allow you to work efficiently and comfortably.

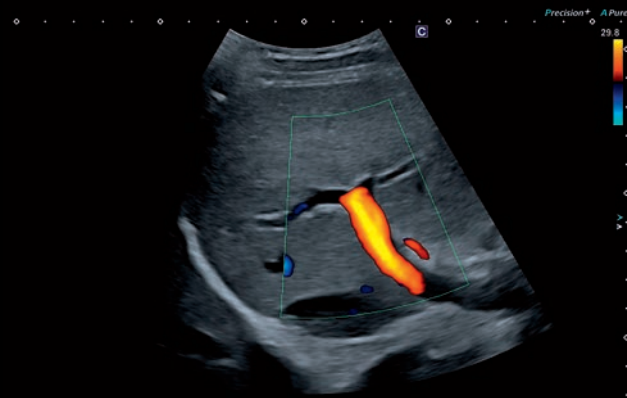


Lightweight design



| | |
|--------------|---------------------|
| Endometrium | 5.46mm |
| Rt Ovary D1 | 30.4mm |
| Rt Ovary D2 | 24.0mm |
| Rt Ovary D3 | 38.6mm |
| Rt Ovary Vol | 14.6cm ³ |

Canon's unique imaging technologies such as Precision and ApliPure+ can help you deliver remarkably smooth images with sharp outlines, improved uniformity and reduced clutter.



Canon's color Doppler combines the sensitivity and penetration of power Doppler with directional information, allowing you to depict blood flow.



With its superb resolution and sensitivity, Advanced Dynamic Flow (ADF) elevates color Doppler to a whole new level of resolution to reveal minute blood flow.



Aplio Flex offers excellent image quality for high frequency applications such as MSK and Canon's BEAM technology can contribute to a clearer visualization of biopsy needles.



Say hello to simple.

Aplio flex is quick and easy to use and offers many smart, time-saving functions for a fast and efficient workflow. It quickly connects you to your network and colleagues, just like it should.

Aplio's Protocol Assistant navigates you through your workflow with a clear, easy-to-read menu. While ensuring that exams are done consistently, it also provides flexibility to step in and out as needed.

A number of practical helpers, such as Canon's Wide View option, can facilitate better clinical insight immediately during the exam by increasing the field of view with the touch of a button.



Its small form factor, low weight and the large easy-roll casters make the system extremely maneuverable.

Flexible

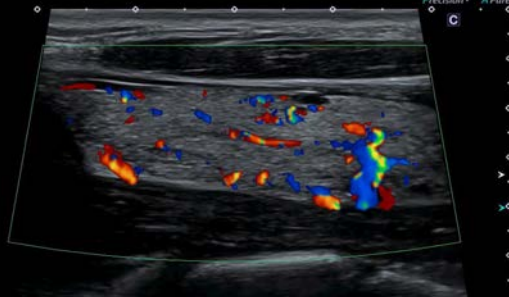
Aplio flex can be supplied with a range of panel heights for optimal positioning depending on your requirements.

Mobile

Thanks to its fully integrated battery option, Aplio flex supports you in working remotely and cordless for up to 30 minutes.



Breast nodule with calcifications.



Thyroid with colloid cysts.



Drive your performance.

What makes the Aplio flex stand out is its consistently high performance across common and many specialized clinical applications. When required, advanced functions can be added to make the system even more productive.





General Abdominal



MSK



Vascular

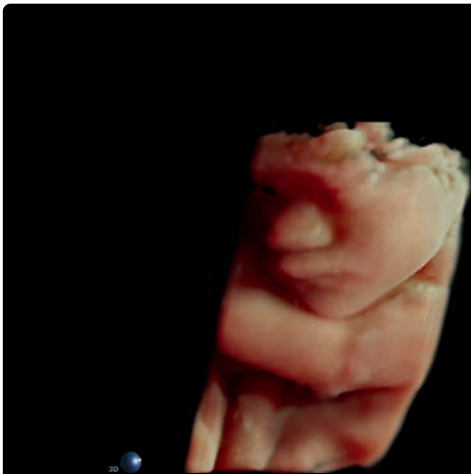


OB/Gyn

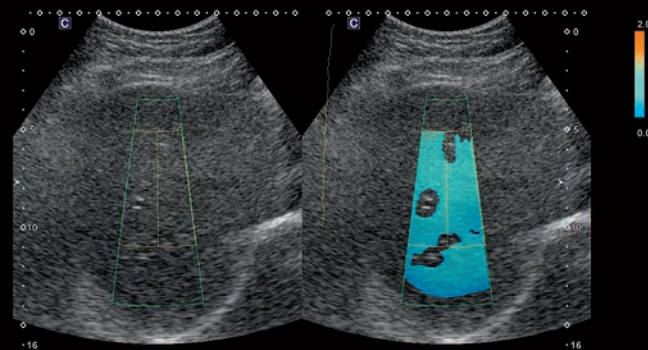


Pediatrics

Aplio flex is a true multi-purpose solution that allows you to complete your daily imaging tasks quickly and efficiently. Many applications can be fully covered with just one of Canon's high-performance transducers, making your work easier and your operation more budget-friendly. For advanced requirements, a range of dedicated transducers for specialized applications is available on Aplio flex.



Particularly in combination with Luminance, Canon ultrasound systems can provide a smooth, natural and detailed 3D/4D rendering with strong visual feedback on depth and detail.



Clinicians may find the attenuation coefficient of ultrasound beams useful for assessing fatty liver disease. Attenuation Imaging (ATI) is a unique application for visualizing the attenuation coefficient.



As a fully shared service system, one of the many exam capabilities of the flex is endovaginal ultrasound as demonstrated in this complex ovarian cyst.

Collaborate and communicate.

Aplio flex offers a variety of ways to quickly connect you to your network, to collaborate with colleagues, and to communicate with Canon specialists – just like it should.



Remote connection

Need expert advice? Or want to share some findings with peers? With Canon's optional ApliGate solution you can interact securely – right from your workplace.



Cloud services

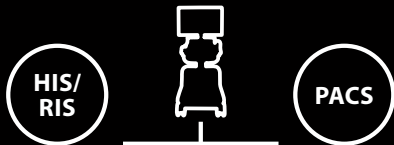
The system's Tricefy* option gives you direct access to cloud-based communication, image management and documentation. With Tricefy, you can instantly share medical images and reports with referring doctors and patients.



Remote support

Connecting Aplio with Canon's InnerVision remote support is simple and provides you with a wealth of benefits that you'll be able to enjoy directly at your system.

*requires an additional third-party subscription and may not be available in all regions



Aplio flex connects seamlessly into hospital networks providing a full-spectrum solution that helps you manage patients and exams while embracing standardized data formats.



For smaller hospitals or practices without an extensive hospital network, Aplio flex also offers the option of connecting to a local NAS in order to securely store and share all data.

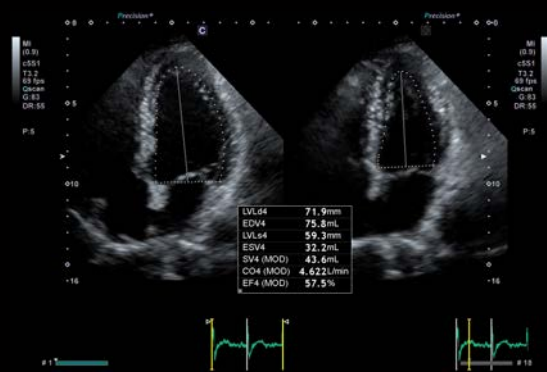


With the embedded raw data functionality you can optimize, review, analyze and report your clinical data either on the device or on an optionally available workstation without losing functionality.



Ease through your day

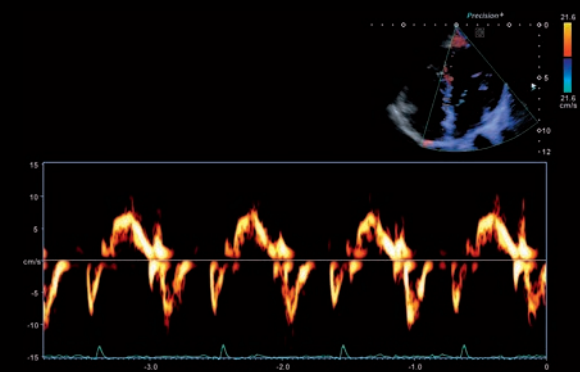
Aplo flex allows you to build a productive, fully integrated work environment in your office or in a mobile setting, so you can work efficiently with the system and share clinical results as needed.



Volume and Ejection Fraction Calculations



Sensitive Color Flow Doppler



Tissue Doppler Imaging

Aplio flex

Canon

CANON MEDICAL SYSTEMS USA, INC.

<https://us.medical.canon>

2441 Michelle Drive, Tustin CA 92780 | 800.421.1968

©Canon Medical Systems, USA 2024. All rights reserved. Design and specifications are subject to change without notice.

Made for Life is a trademark of Canon Medical Systems Corporation. Tricefy is a trademark of Trice Imaging, Inc. Canon Medical Systems Corporation meets internationally recognized standards for Quality Management System ISO 9001, ISO 13485. Canon Medical Systems Corporation meets the Environmental Management System standard ISO 14001.

Disclaimer: Some features presented in this brochure may not be commercially available on all systems shown or may require the purchase of additional options. Please contact your local Canon Medical Systems representative for details.

ULBR14544US

Made For life