

Canon

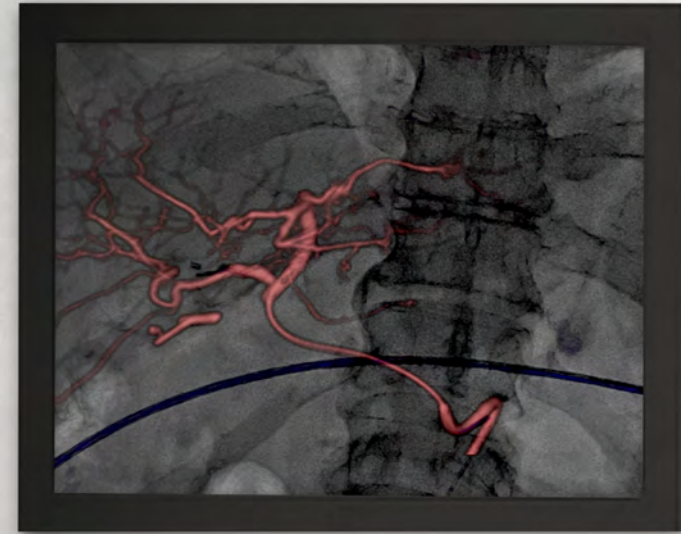


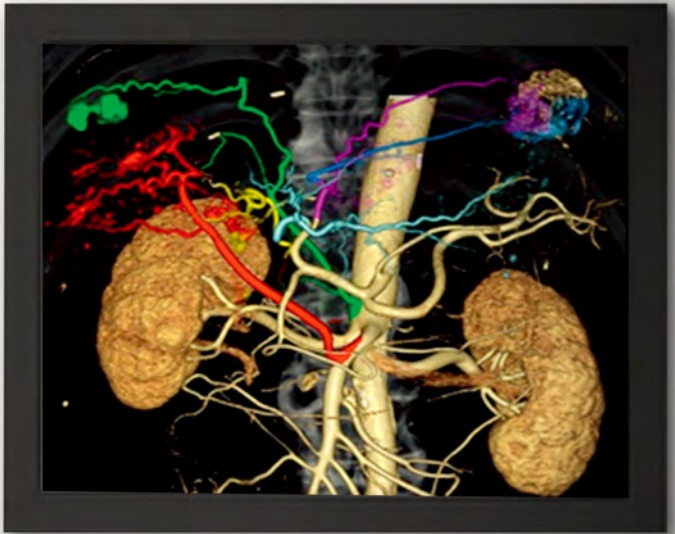
Alphenix 4DCT

Seamless integration

Quickly diagnose, treat and verify with confidence.

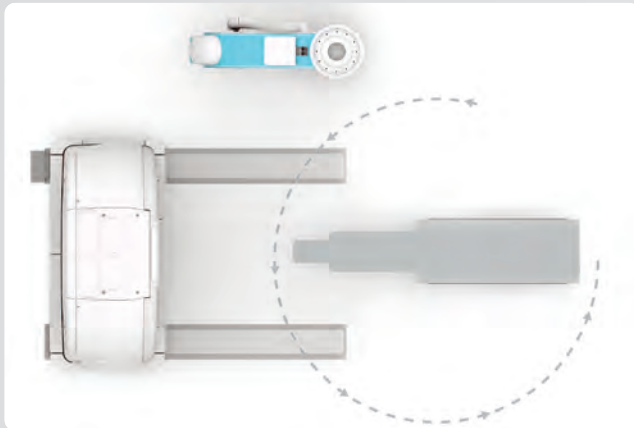
Alphenix 4D CT seamlessly integrates our flexible Alphenix interventional system with the advanced Aquilion CT imaging suite into one versatile solution. With the ability to see, diagnose, plan, treat and verify in the same room, Alphenix 4D CT helps you prioritize safety, speed and efficiency during complex interventions.





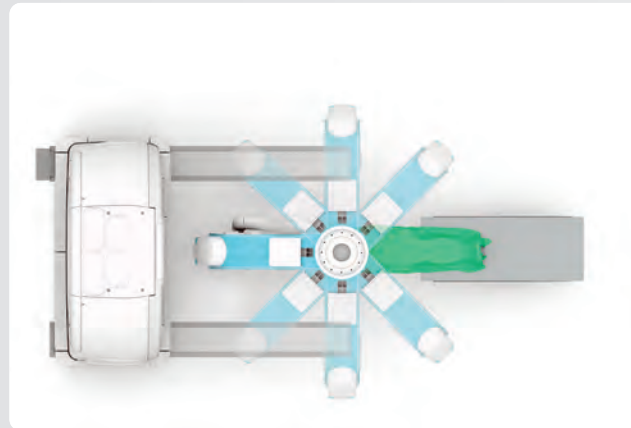
One room. One system. Many procedures.

The Alphenix 4D CT system combines the interventional lab with a complete CT imaging suite into a single versatile clinical solution that delivers a seamless patient experience. With a streamlined workflow in a single setting, you no longer need to transfer the patient between departments, enabling you to improve patient care and boost productivity.



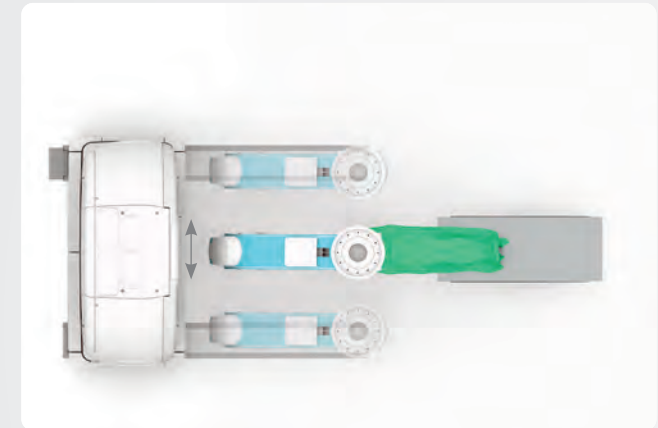
Get 360° access to the patient when needed

Convenient parking positions for both the C-arm and the CT gantry ensure free access to the table for patient mount and emergency procedures.



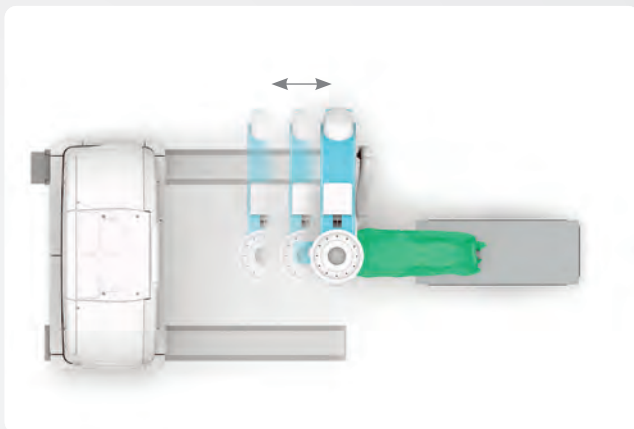
Freedom to move with your workflow

Alphenix offers a 270° range of movement allowing you to position the C-arm to suit your workflow even during the most complex interventional procedures.



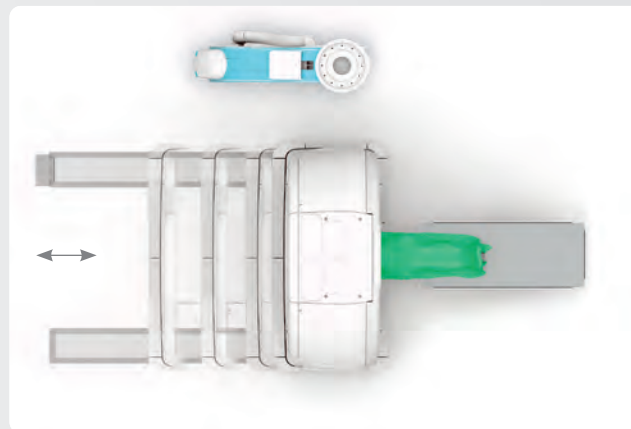
Unique lateral coverage to aid transradial procedures

The dual-track ceiling-mounted C-arm of the Alphenix 4D CT provides unique fingertip-to-fingertip coverage during transradial and transbrachial procedures.



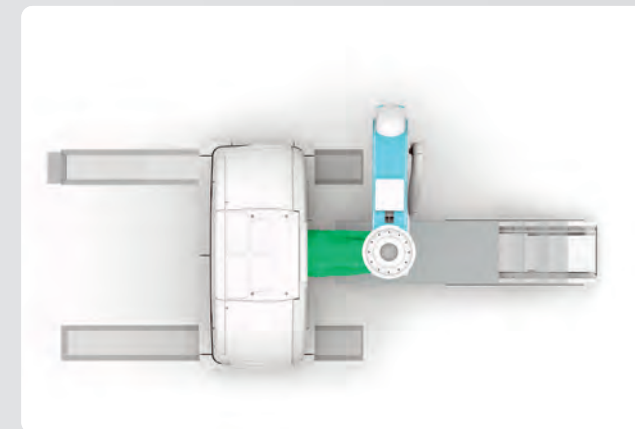
Unprecedented head-to-toe access

With the CT gantry fully parked, the Alphenix C-arm provides fast, flexible anatomic coverage from virtually any position.



Perfectly positioned for fine detail visualization

Advanced CT imaging with the industry's only 0.5 mm detector element provide high-resolution images to support the planning and verification of interventional procedures with confidence.

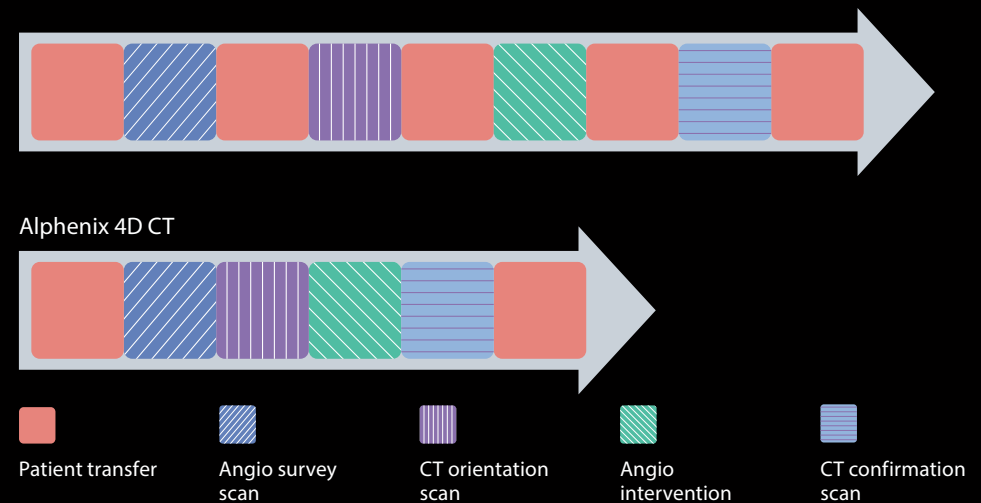


Seamless guidance from diagnosis to treatment

Prioritize procedural efficiency and simplify workflow as ^{SURE}Guidance technology automatically synchronizes positioning data of the region of interest between imaging modalities.

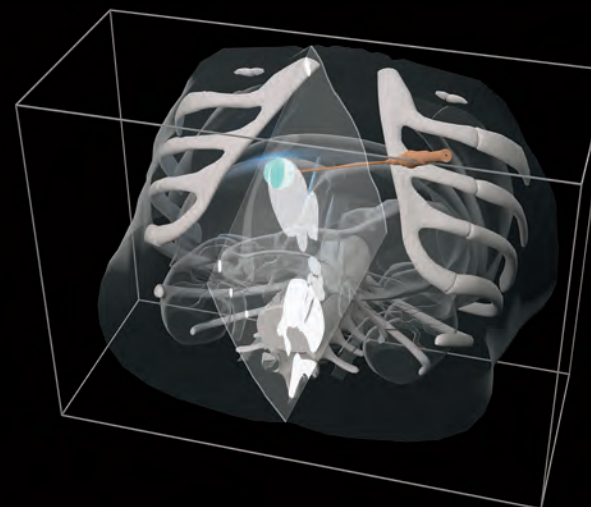
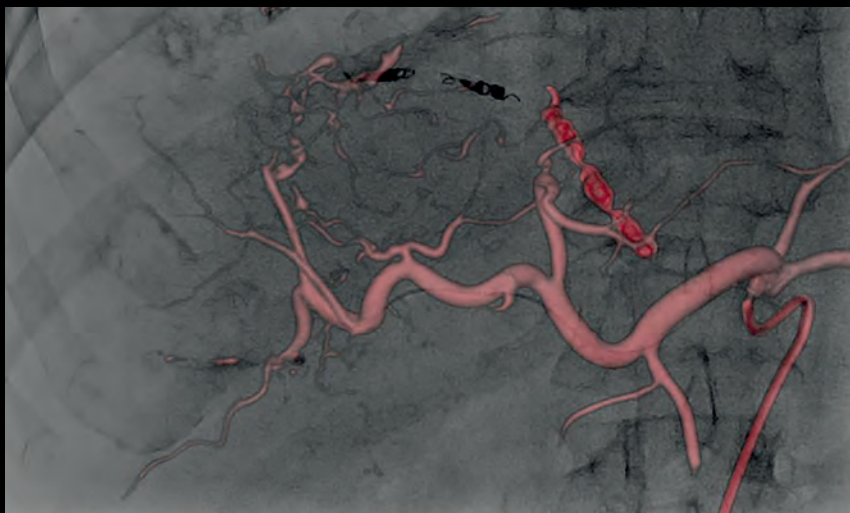
Tightly integrated to help you boost productivity and patient care.

Greater than the sum of the two parts. Canon Medical's Aquilion CT imaging suite and the Alphenix angiography system work in concert to help you provide real improvements in efficiency, workflow and clinical confidence.



Eliminate patient transfer and improve efficiency

With the Alphenix 4D CT there is no need to transfer patients between rooms to confirm device placement or procedural success. Switching between CT and angio systems is smooth and fast. Both systems can be used in tandem without the need to park one of them.



Navigate in 3D with confidence and accuracy

3D roadmapping enables you to superimpose a 3D reconstructed vessel and device-enhanced mask volume on the fluoroscopic image, enabling guidewire and catheter manipulation, and linking the rotation of C-arm and table movement to allow visualization of the target anatomy.

CT and angiography in sync

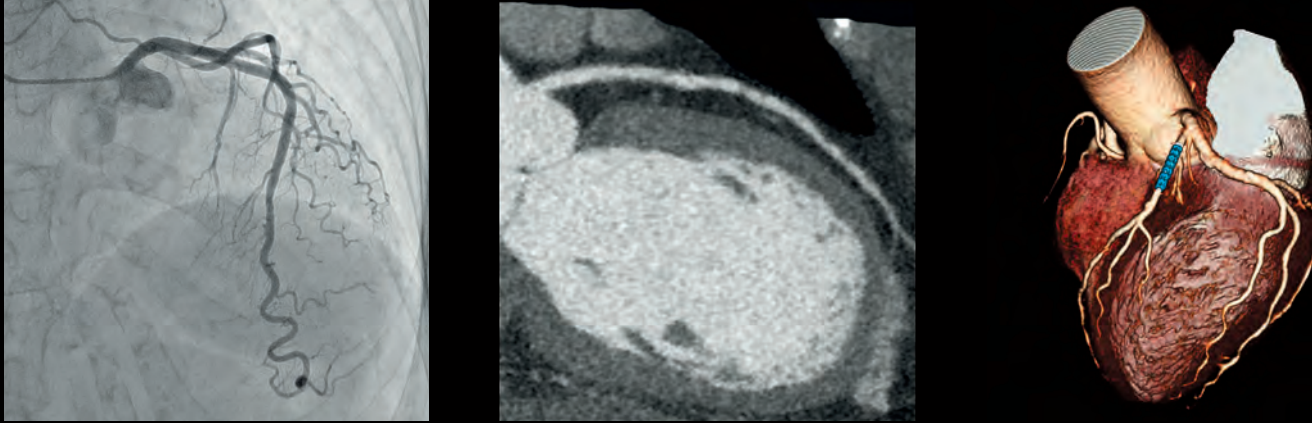
Canon Medical's unique ^{SURE}Guidance feature synchronizes the location of the region of interest between the two imaging modalities. The CT gantry, angiographic C-arm and table move automatically to do the rest, enabling you to streamline workflow and prioritize procedural efficiency.

Diagnose and treat with speed and flexibility.

Speed is crucial. Robust diagnostic images can be captured in a fraction of a second, enabling you to minimize dose exposure, image artifacts and procedure time. With the flexibility of the interventional suite, you can treat without moving the patient. Across a wide range of clinical applications, from oncology, cardiology, neurology and trauma care, Alphenix 4D CT offers possibilities to deliver safe and efficient treatment to your patients.

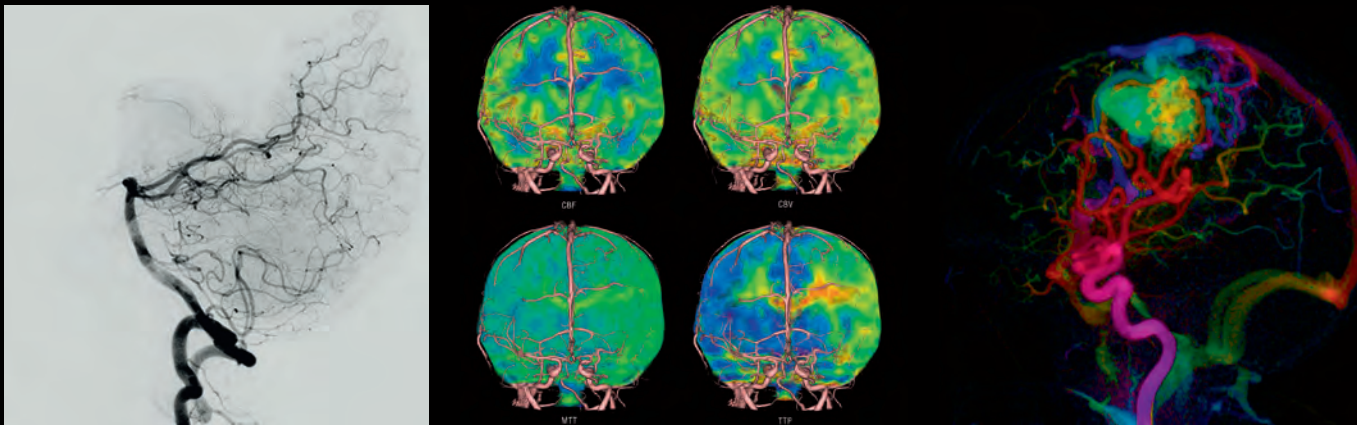


Cardiac intervention



Alphenix 4D CT provides robust low-dose cardiac CTA. One rotation is all it takes to capture the entire heart in just a split second with the Canon Medical Systems wide-area¹ detector technology. Reducing motion artifacts, this technology may be perfect for planning interventional procedures and for verifying percutaneous stent or valve placements and repairs immediately at bedside.

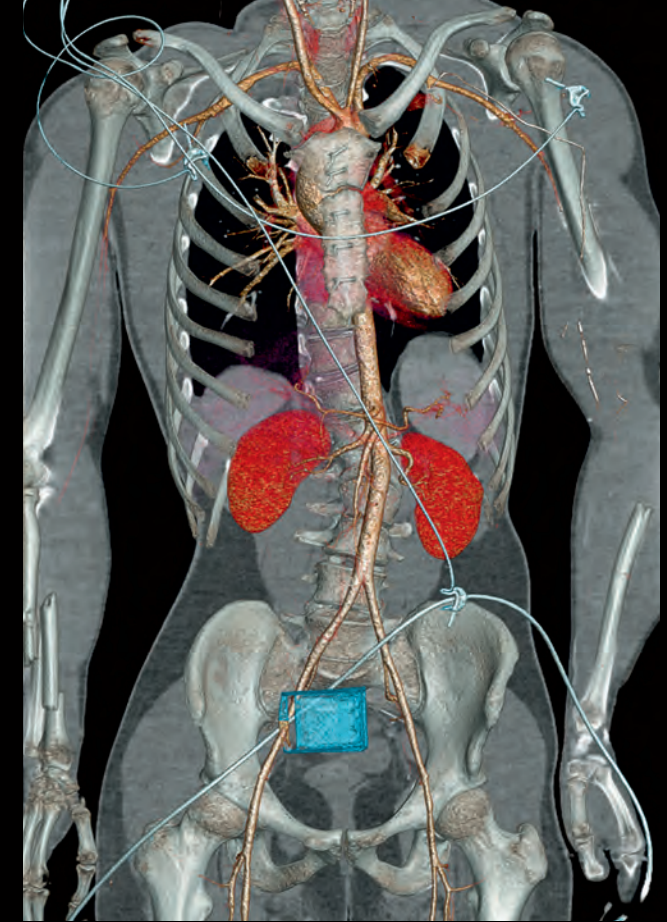
Neuro/stroke



Canon Medical Systems' wide-area* detector technology delivers iso-phasic 4D vascular imaging without table or gantry movement for robust evaluation of fistula and aneurysm treatment. The Neuro ONE stroke protocol provides dynamic perfusion mapping for fast and reliable diagnostics in acute stroke patients.

*Wide area detector technology available only with Aquilion ONE CT systems.

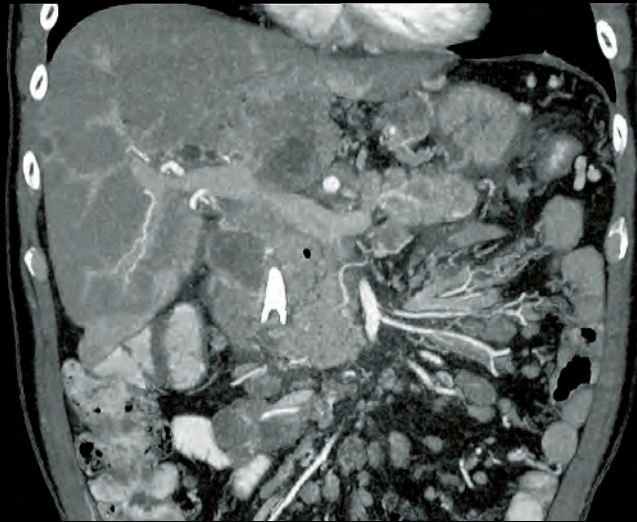
Trauma



Speed is foremost important in managing trauma patients. With Alphenix 4D CT you are now capable of imaging and treating in the same room without the need to move the patient, enabling you to save valuable time.

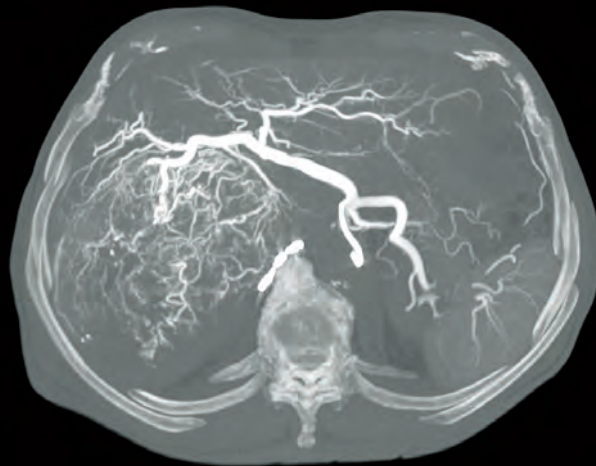
Advanced dose management, outstanding image quality.

Alphenix 4D CT systems bring together an extensive range of hardware features and software tools, all designed to help you deliver outstanding image quality with minimal dose exposure. In CT, advanced technologies help simplify complex protocols and optimize procedure time, without compromising image quality.



Achieve high-quality images

Compared to cone beam CT, true CT imaging in the same room may help you deliver improved image quality and better low contrast detectability, as well as a larger axial field of view. Advanced modes such as whole organ perfusion is only available on wide area detector models.



Reduce patient dose

Iterative reconstruction technology AIDR 3D* Enhanced is fully integrated into the CT system's workflow to improve image quality at reduced dose for each patient.



Genuine CT offers many advantages over cone beam CT. More flexible imaging with better image quality and faster acquisition, and last but not least, a significantly lower effective dose help you perform complex procedures efficiently and safely.

IMAGING	CONE BEAM CT	ANGIO CT
image quality	limited	optimal
FOV/coverage	limited, fixed	extended, flexible
contrast-enhanced imaging	single phase only*	multiple phases
WORKFLOW	CONE BEAM CT	ANGIO CT
preparation/iso centering	time-consuming	simple, fast
patient breathing	high impact	negligible
post-processing	complex	highly automated
DOSE	CONE BEAM CT	ANGIO CT
effective dose	high	low

*Multiphase acquisition is available in Alpha CT.

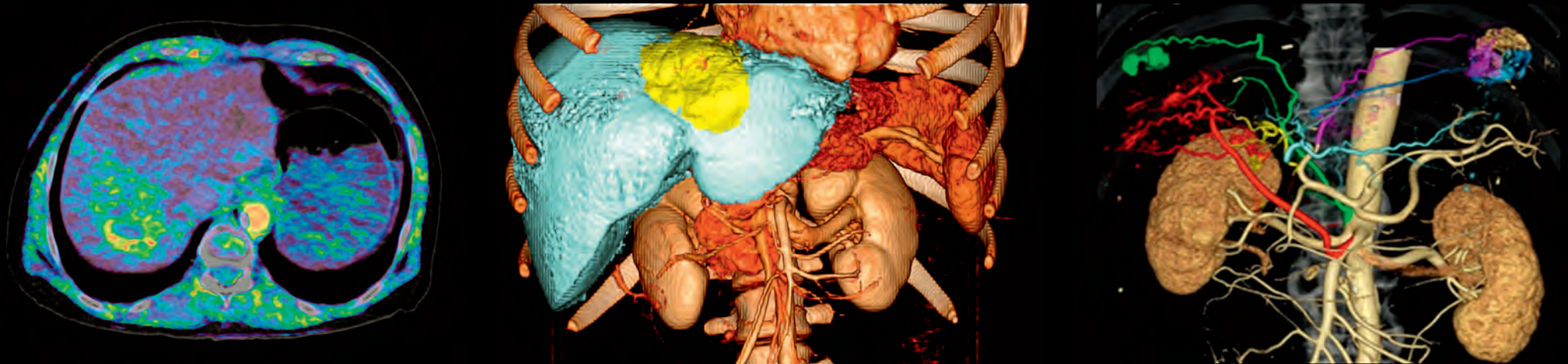


Better patient access, extended field of view

The extra-wide, flared gantry of our CT scanners provides outstanding patient access from front and rear. Compared to cone beam CT, true CT scanning offers the ability to acquire images with an extended field of view.

Visualization through advanced 4D tools.

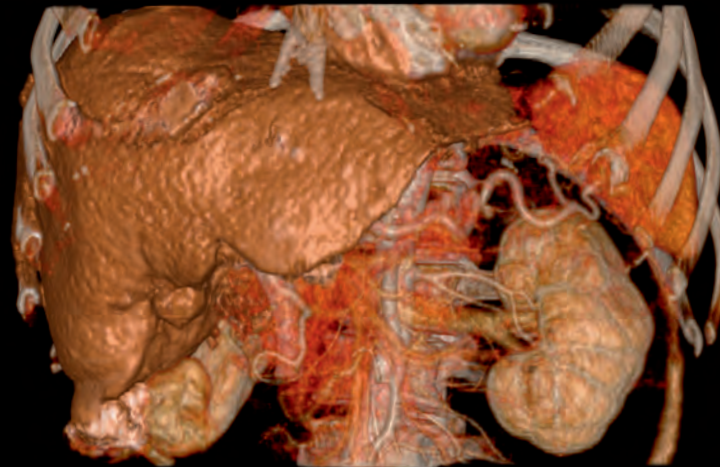
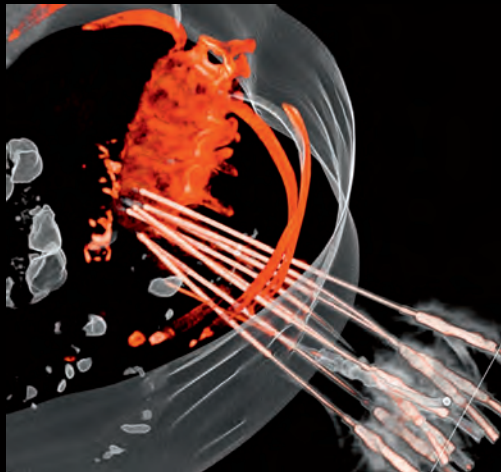
The flexibility of the Alphenix angiography system, combined with the advanced dynamic volume CT capabilities of Aquilion, provide a powerful solution for a wide range of image-guided interventions.



Advanced Interventional Guidance

Advanced perfusion imaging may assist you in imaging and treatment planning of tumors and immediately verifying the response to therapy. Alphenix 4D CT helps you to simplify the positioning of catheters and needles with 4D imaging of tumor vascularization and real-time 3D needle tracking.

Canon Medical's wide-area detector CT technology can acquire up to 16 cm coverage in a single split-second rotation. High-quality morphological and functional imaging may help support your treatment workflow allowing you, for example, to position devices and needles accurately or quickly verify response to a procedure.



One rotation is all it takes

Aquilion ONE / GENESIS Edition 16 cm wide area detector may help improve your ability to obtain high-quality images with reduced artifacts.* One rotation is all it takes to acquire a whole heart, a neonatal chest, a foot or an ankle, in a split second with reduced dose and motion artifacts.

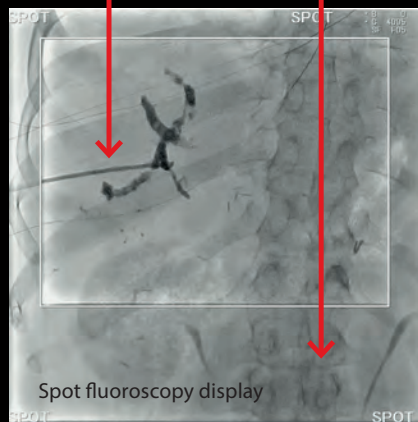
*As compared to cone beam CT

Protection for your patients and clinical staff.

Dose management is an important issue for everyone. Every step of the imaging chain has been optimized to help you reduce radiation dose while prioritizing workflow and image quality. Our comprehensive dose management solution, combines advanced detector design with an array of powerful software features, providing you with an extensive host of dose-saving and dose management functions.

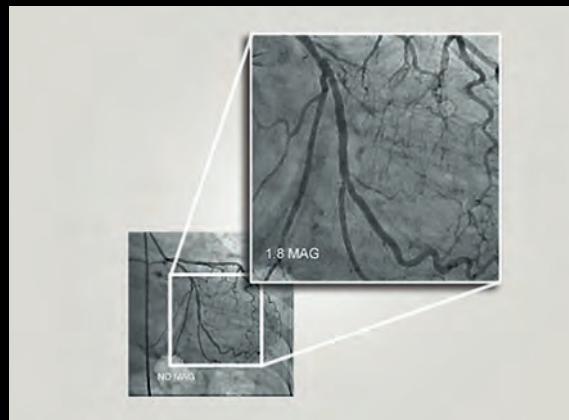
Active targeted fluoro area

Surrounding reference area, no radiation



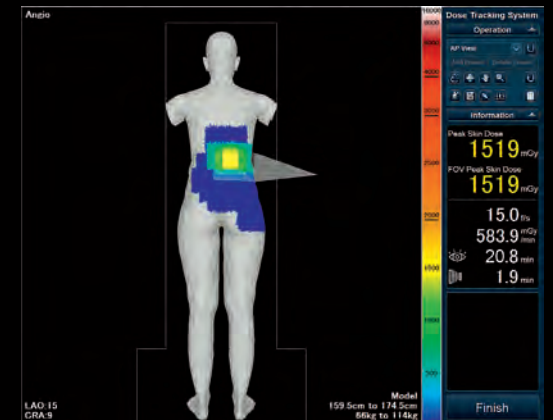
Spot Fluoro Display

Spot Fluoro* can result in substantial dose reduction by superimposing the Last Image Hold (LIH) over live fluoro and eliminating the need to open up collimation for viewing landmarks outside the spot field.



Live Zoom

Live digital zoom increases image display size in real time during both fluoroscopy and digital acquisition.



Dose Tracking System (DTS)

The operation screen of the Dose Tracking System, illustrating the color-coded skin dose distribution display area and the dose information display area that includes numerical peak skin dose and FOV peak skin dose estimates.

Configure your Alphenix 4D CT with the CT that meets your needs.

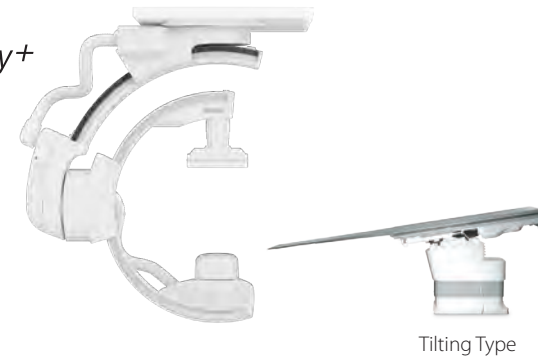
The Alphenix 4D CT is available with different CT configurations including Aquilion ONE / GENESIS*¹ Edition, to provide the optimum solution for any clinical environment.

*¹ CT couch not included

Alphenix Sky



Alphenix Sky+



Aquilion Prime SP

- 78 cm bore
- 80 slices (upgradable to 160 slices*²)



Aquilion ONE GENESIS Edition

- 78 cm bore
- 640 slices*²
- 16 cm coverage in one rotation



Aquilion Prime SP

- 78 cm bore
- 80 slices (upgradable to 160 slices*²)



*² ConeXact double slice technology

Alphenix 4D CT

Follow us: <https://us.medical.canon>



@CanonMedicalUS



Canon Medical Systems USA, Inc.



+CanonMedicalUS

Canon

CANON MEDICAL SYSTEMS USA, INC.

<https://us.medical.canon>

2441 Michelle Drive, Tustin CA 92780 | 800.421.1968

©Canon Medical Systems, USA 2020. All rights reserved. Design and specifications are subject to change without notice.

Alphenix, Aquilion, Aquilion ONE, Aquilion ONE / GENESIS, ^{SURE}Guidance and Made for Life are trademarks of Canon Medical Systems Corporation. Other company and product names appearing in this document may be trademarks or registered trademarks of their perspective holders. YouTube logo is a trademark of Google Inc. TWITTER, TWEET, RETWEET and the Twitter logo are trademarks of Twitter, Inc. or its affiliates. LinkedIn, the LinkedIn logo, the IN logo and InMail are registered trademarks or trademarks of LinkedIn Corporation and its affiliates in the United States and/or other countries.

Disclaimer: Some features presented in this brochure may not be commercially available on all systems shown or may require the purchase of additional options. Please contact your local representative from Canon Medical Systems for details.

The clinical workflow and results described in this brochure may vary due to clinical setting, patient presentation and other factors.

VLBR13152US MCAVL0004EB

Made For life