

Canon

Alphenix Dualplane

Shared Lab



Two labs in one for unprecedented versatility

Get two labs in one. With Canon Medical Systems' innovative dual plane system, clinicians can utilize shared labs to help them cost-effectively meet their increased demand for performing more procedures. Alphenix delivers versatility: One system with two C-arms, one smaller panel for cardiac and one larger panel for peripheral procedures and customized setup options to accommodate available space. With these options and more, the Alphenix Dual Plane system offers the power for a shared lab to meet its full potential.



OPTIMAL EFFICIENCY IN ONE ROOM

Our systems deliver flexibility to use the tools you need, when you need them. With Canon Medical Systems' **WorkRite** technology, shared labs offer clinicians the right equipment for the right procedures.

Dedicated C-arms

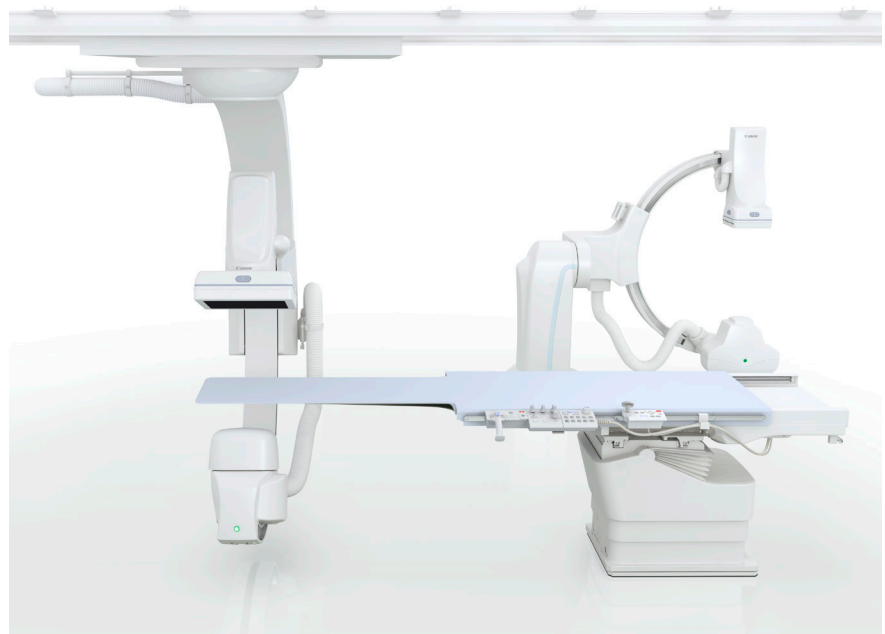
Canon Medical Systems' exclusive dedicated C-arms allow clinicians to meet both cardiac and peripheral needs in one room.

Park one arm for cardiac procedures, then bring in the other arm for peripheral work. With a seamless transition when switching, shared labs can now offer clinicians the versatility they want without sacrificing quality.



Customizable Setup

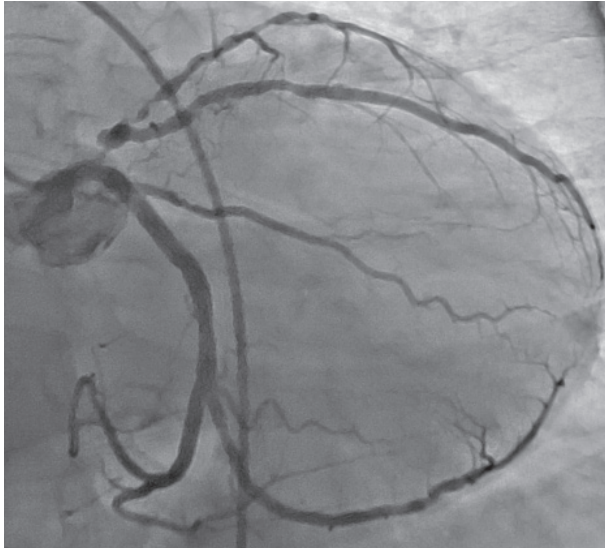
With a 90 degree and zero degree configuration, easily customize the system to your available space, enabling you to streamline your workflow and increase your throughput, meeting each lab's unique needs.



“ I need optimal performance with ”
zero compromises in the same room.

HIGH IMAGE QUALITY

Our **ImagingRite** suite of technology includes advanced imaging applications and innovative tools.

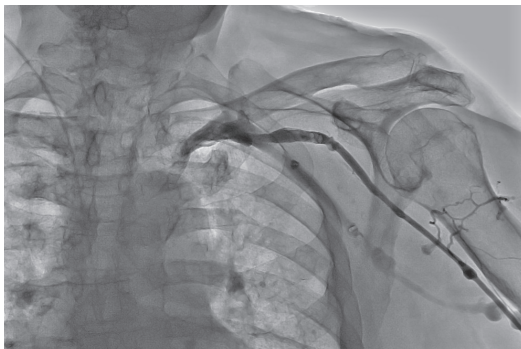
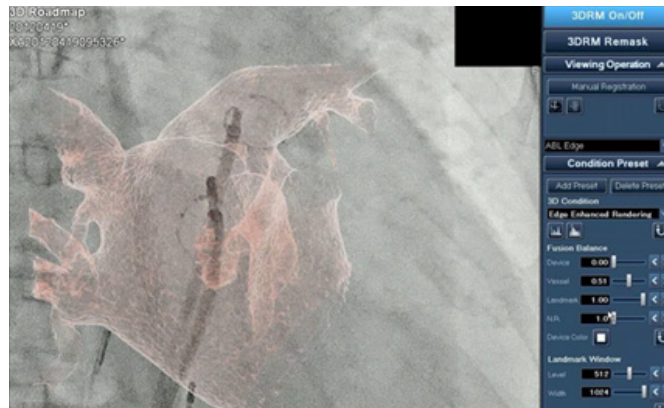


- **2D Coronary Rotation.** Get all of the information you need in one acquisition with pre-set programs that rotate around the coronary vessels.
- **Quantitative Coronary Analysis (QCA).** Measure stenosis in the coronary arteries.



- **Vital TAVR Planning.** Preplan to determine access pathways and key anatomical measurements before you enter the lab.

- **3D Multi-Modality Fusion.** Overlay a previously acquired 3D data set with a live, current image to use with a live blur-over.



- **Dynamic Trace.** Perform contrast runoff anywhere in the body.
- **Stepping Digital Subtraction Angiography (S-DSA).** Move the table on the second run with automated stepping table movement during digital subtraction angiography.



Optimum Image Quality at Reduced Dose

DOSE MANAGEMENT

Based on Canon Medical Systems' **DoseRite** technology, dual plane shared lab systems include the options of two different panels — an 8x8 cardiac panel and a 12x16 peripheral panel. Unlike other systems, which have a standard panel size for all procedures, this innovative design means physicians can achieve the angles they need for the images they want.



Follow us: <https://us.medical.canon>



@CanonMedicalUS



Canon Medical Systems USA, Inc.



+CanonMedicalUS

Canon

CANON MEDICAL SYSTEMS USA, INC.

<https://us.medical.canon>

2441 Michelle Drive, Tustin CA 92780 | 800.421.1968

©Canon Medical Systems, USA 2020. All rights reserved.
Design and specifications subject to change without notice.

Alphenix, DoseRite and Made for Life are trademarks of Canon Medical Systems Corporation. Vitrea is trademark of Vital Imaging Inc.
YouTube logo is a trademark of Google Inc. TWITTER, TWEET, RETWEET and the Twitter logo are trademarks of Twitter, Inc. or its affiliates.
LinkedIn, the LinkedIn logo, the IN logo and InMail are registered trademarks or trademarks of LinkedIn Corporation and its affiliates in the United States and/or other countries. *The Alphenix Dual Plane is the INFX-8000F.

VLBR12842US MCAVL0016EB

Made For life